



# Green Policy

September 2021

RESTRICTED – Version 1.1



# Reduce Inova's Carbon Footprint

Inova greenhouse gas emission reduction program was launched in 2019.

Ludovic and Nathan have been trained in the ABC Carbon Footprint methodology to perform Carbon Footprint evaluations for Inova. Results are compliant with the ISO 14001:2015 standards about the Environmental Management Systems. The carbon footprint exercise is performed annually.

All the Greenhouse Gas emissions are calculated based on "equivalent CO2" (eCO2).



Despite a global slowdown in 2020 due to COVID-19 pandemic, the world still needs to radically reduce its carbon emissions.

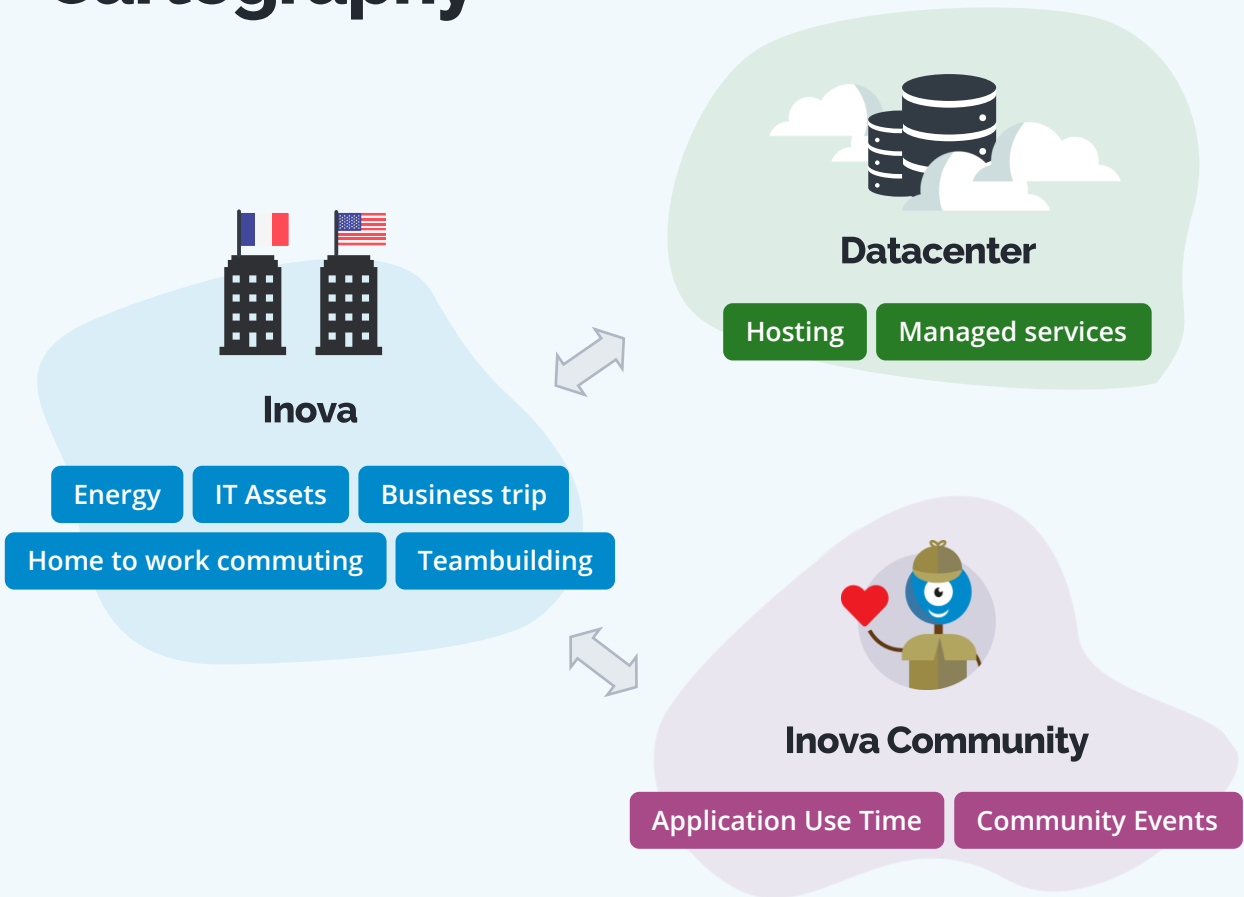
Under the Paris 2015 agreement, a goal was set to halve emissions by 2030. We all have ideas about what should be done at a national or worldwide level to meet this goal – encouraging solar and wind farms, taxing polluting industries, even restructuring entire economies – but it's often harder to change our own behaviors.

**What if, instead of waiting for a global response, we tried to reduce Inova's carbon footprint by 50%? What would it take for a 100 employees global SaaS business to halve its carbon emission?**

Those are the questions we asked ourselves in 2018 when we decided to begin our journey towards becoming a low carbon SaaS business. Our goal was to find new ways to operate to reduce our carbon footprint. That means reducing both our carbon intensity (gCO2/min spent on our applications) and, most importantly, the total amount of CO2eq emitted by our business.

Two years after setting out on this low carbon journey, we are proud to be establishing best practices for low carbon SaaS businesses. We are learning from our successes and our failures and striving to be better every day. Inova has taken on a significant challenge, but we are committed to our goal and we will play our part to meet the Paris 2015 targets.

# Carbon Footprint Cartography



- ▶ **Energy:** value based on the electricity consumption for Lyon and New York offices.
- ▶ **IT assets:** value based on the conception and use of IT assets like computers, external screens, printers, microphones...
- ▶ **Teambuilding / Extra activities / Afterworks:** value based on the monetary value of the extra activities.
- ▶ **Home to work commuting:** value based on the quantity of eCO2 emission needed for the Inova employee to reach the office.
- ▶ **Business Trips:** all the business travel for conferences, on-site client meetings, etc.
- ▶ **Datacenter (energy and services):** value based on statistics about datacenter's Carbon emission
- ▶ **Inova Community:** value based on the Inova application use time and carbon emission required to organize community events.

# Carbon Footprint: Exercise Results

Year	Employees	Total tons of eCO2*	Total tons of eCO2 per employee	Total grams of eCO2 / minutes application usage time
2018	50	334.4	6.74	41.5 gr/min
2019	60	346.1	5.77	30 gr/min
2020	80	227	2.8	34.1 gr/min



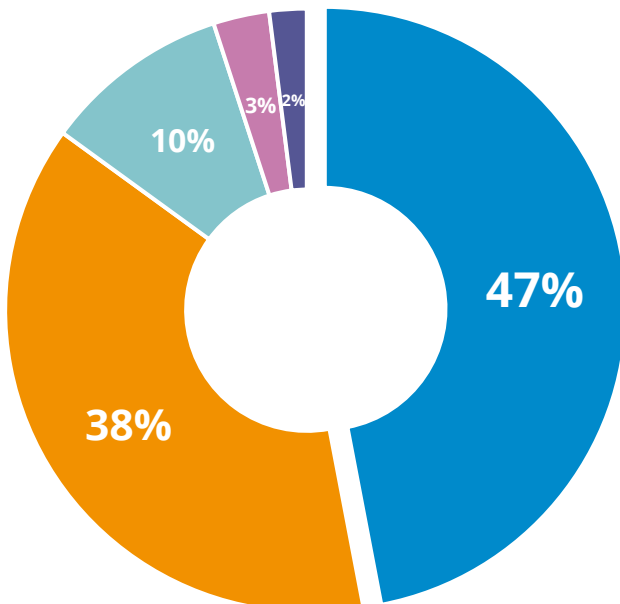
A long-distance flight



An Inova Cloud Application session



A request on Google



## Inova CO2 emissions from operations and transport (2020)

- Office & R&D
- Business Flights
- Production
- Inova Business transport (cars, train, metro, ...)
- Inova Home to Office transport



# Green Policy

1. Home to work Commuting

2. Business Trips

3. Green IT

4. Office

5. Customer Interaction

6. Green Datacenter



#1

# Home to work Commuting



## ✔ Facilitate “Work from Home”

All the Inova employees have a laptop and is able to work from home if needed. Collaborative solutions will help people to stay connected with their colleagues.

#2

## Business trips



### ✔ Use videoconferences solutions to meet people.

Favor virtual conferences to physical conferences.

💡 Reduce the use of camera to minimum

- ✔ To say "Hello!"
- ✔ During a 1-to-1 discussion
- ✔ Asking question at the end of a presentation

### ✔ Think your business trip differently

Following best practices can help make responsible decisions when you need to travel to meet clients, prospects or participate in a conference.

<b>Train</b>	Feel free to use the train. They have lower carbon emissions than other transportation means.
<b>Public transport</b>	Feel free to use public transport (metro, tramways, bus). Public transport companies are working to reduce their carbon emissions.
<b>Taxi</b>	If public transport is too complicated, a taxi can be used. Try to share the ride and use an electrical taxi if possible, to optimize carbon emissions.
<b>Car</b>	If possible, use/rent a hybrid or electric car and share your ride with a colleague.
<b>Flight / Plane</b>	If the trip can be done within 4 hours, flying is forbidden. If the business trip requires a flight , only 1 colleague should attend the meeting. Give priority to direct flights (Aircraft take off represents a significant part of the CO2 emission).

#3

# Green IT



<b>Computer / Screen</b>	Switch off your computer and external screen at the end of the working day.
<b>Electronic Data Storage</b>	Mailbox is not a data storage. Important documents must be stored in OneDrive or SharePoint. Mailbox and storage folder must be cleared and archived regularly.

In addition, Inova's IT Department is committed to:

▶ **Recycling IT assets and depreciation**

*Keeping a computer for 4 years instead of 3 years will reduce eCO2 costs by 25%.*



#4

# Office



<b>Electricity Consumption</b>	Turn lights off in rooms not being used during the day
<b>Recycle Bin</b>	Use adapted recycle bins to trash paper, boxes, glass
<b>Paper Consumption</b>	Print fewer hard copies - Try to rely on electronic copies Try to use double-sided printing to save paper

In addition, Inova is committed to:

- ▶ **Using electric company cars**
- ▶ **Choosing a low-carbon local energy provider** (if possible)
- ▶ **Looking at the local economy for any kind of purchase** (when it is possible)
- ▶ **Replacing neon and traditional lights by LED lights** when possible

#5

# Customer Interaction



## ✔ Encourage Virtual Events

Virtual events are less expensive and lead to less carbon emissions than big events.

## ✔ Implement a “Green coding” policy

This process aims to optimize software to reduce carbon emissions. It includes algorithmic efficiency and resource allocation).

#6

# Green Datacenter



Inova, as a software editor, is dependent of a hosting provider. The idea is to consider and challenge the environmental approach of the hosting partner. A lot of improvements on Datacenter infrastructure have been done over the last ten years (air conditioners and energy).

To improve Cloud application hosting's eCO2 emission, Inova is committed to:

- ▶ **Optimizing the Inova Cloud platform infrastructure** (storage, virtualization).
- ▶ **Favoring a hosting partner with low carbon emission approach.**